

# TYLÖ

Redefining wellness

## INFRARED



# REDEFINING WELLNESS



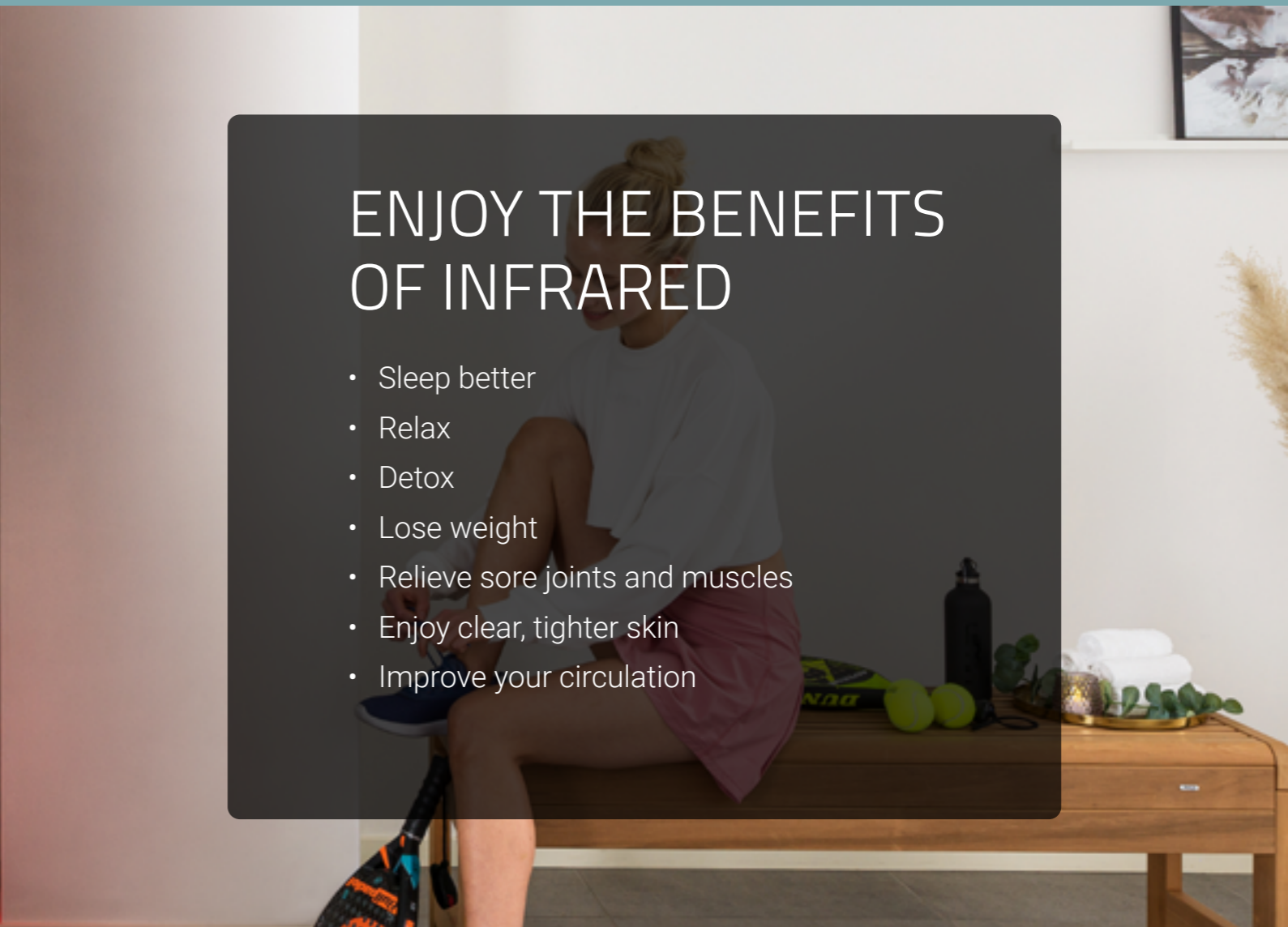
Bring the health benefits of heat into your home with a Tylösand infrared cabin. Easy to install and simple to use, a stylish Tylösand cabin brings that Swedish summer feeling to your home. Tough workout? Need that rehab time? Switch on the IR. Now switch off from stress.

Tylösand infrared cabins from Tylö, a company with over seventy years' experience of offering high quality sauna experiences, and more than 20 years of offering infrared warmth. Tylö redefines the sauna scene by creating top quality sauna products that become a part of healthy living.

Welcome to our great world of saunas.

## Contents

How infrared cabins work	4
Enjoy the benefits of infrared	5
Helping your health, helping our planet	7
Easy to install, easier to enjoy	7
<b>TYLÖSAND INFRARED CABINS</b>	<b>8</b>
Features for extra comfort and style	10
Smart, intuitive control panel	10
Enjoy therapy through colours	11
Why Hotel Tylösand chose... Tylösand infrared cabins	12
More effect, less energy	14
<b>COMBINATION 2 IN 1 SAUNA</b>	<b>15</b>



## ENJOY THE BENEFITS OF INFRARED

- Sleep better
- Relax
- Detox
- Lose weight
- Relieve sore joints and muscles
- Enjoy clear, tighter skin
- Improve your circulation

## HOW INFRARED CABINS WORK

An infrared cabin uses IR waves to create heat, penetrating your body directly without heating the air around you. This causes you to sweat at lower temperatures than a traditional sauna.

According to The Mayo clinic\*, studies show that infrared saunas reduce the effects of chronic illnesses such as high blood pressure, type 2 diabetes, arthritis and more. They found no adverse effects with infrared saunas.

\* <https://www.mayoclinic.org/healthy-lifestyle/consumer-health/expert-answers/infrared-sauna/faq-20057954>

## RELAX AND REWIND IN YOUR OWN INFRARED CABIN

From a deep, purifying detox sweat to pain relief, less fatigue and better sleep, an infrared cabin offers lots of benefits for rest and rejuvenation. Some people say it even offers anti-aging from tighter skin.

Investing in a Tylösand infrared cabin isn't just about relaxation, it's investing in your mind, body and general health.



## HELPING YOUR HEALTH, HELPING OUR PLANET

Our infrared cabins are powered by infrared heaters. These integral wall panels have a heater surface area and power output that give you a therapeutic, even heat all over your body. Exterior surfaces are finished with biodegradable wood treatment. They offer a more luxurious look and are easy to maintain. Being biodegradable they have little harm on our environment when you recycle them.

## EASY TO INSTALL, EASIER TO ENJOY

It's easy to assemble a cabin and you don't need any tools. Simply mount the wall panels onto an easy-fit base and top them off with easy-fit ceiling panel. The prefabricated wall panels, benches and floor are all delivered in clear Hemlock to offer you the best in cabin furniture quality.



### **BODY-FRIENDLY**

Infrared bathing is a safe and comfortable way to detox. It relieves aches pains and stress.



### **PLANET-FRIENDLY**

Infrared technology uses as little or less electricity than many other common household appliances.



### **TIME-FRIENDLY**

You don't wait for an infrared cabin to heat up, so you can enjoy its benefits anytime.



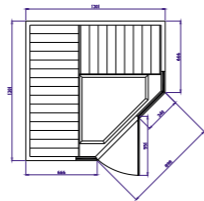
### **FAMILY-FRIENDLY**

Infrared cabins are safe and easy to use for adults and children alike.



## CHOOSING YOUR CABIN IS AS EASY AS 1,2,3

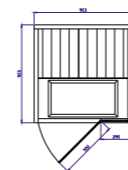
Prefer to relax alone? Choose a one-person cabin. Want to share some heat for two? Then our 2-person cabins are for you. Relax in infrared heat with the family? Our 3-person cabins have all the space you need. All our cabins are available in black and grey and have all the space you need. And if you don't want to choose, you can opt for a combi cabin that offers both infrared and a traditional sauna experience, see page.15.



### Tylösand T-870

A combination of great design and superb space efficiency, the T-870 infrared cabin comes with a 5-sided design. It's ideal for two or three people and fits into almost any corner. Naturally it offers all the excellent features you expect from other models including: Low EMR, all-glass front wall, , RGBW light control with dimmer, valance light and colour light therapy.

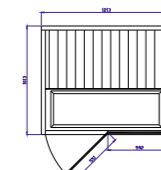
Dimensions: W 1301 x D 1301 x H 1938 mm



### Tylösand T-810

The perfect infrared cabin if you're short of space or just want to sauna alone. The T-810 offers the same luxurious features as the larger models: Low EMR, all-glass front wall, RGBW light control with dimmer, valance lights and colour light therapy. You can install Tylösand T-810 in almost any room.

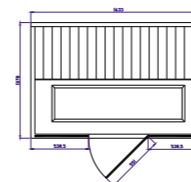
Dimensions: W 913 x D 913 x H 1938 mm



### Tylösand T-820

The extremely popular T-820 infrared cabin is perfect for one or two people. It sports all the luxurious features you get in the other models including Low EMR, all-glass front wall, RGBW light control with dimmer, valance light and colour light therapy. Want more luxury in the master bedroom? Or fancy adding some style to your workout area? T-820 easily fits into both.

Dimensions: W 1213 x D 1013 x H 1938 mm



### Tylösand T-825

The roomy, elegant T-825 infrared cabin is for two or three people and has the same luxurious features you find in all the other models: Low EMR, all-glass front wall, RGBW light control with Dimmer, valance light and colour light therapy.

Dimensions: W 1633 x D 1078 x H 1938 mm



# FEATURES FOR EXTRA COMFORT AND STYLE

Your Tylösand infrared cabin comes with a variety of top-class standard features and offers an array of colour treatments.



## Handle

Handle that doubles as a towel rack on the outside and a tablet holder on the inside.

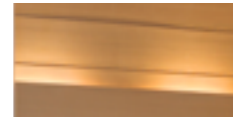


## Floor

The CarbonFlex® floor plate with infrared heat in colours that match the panels.



**COME OUT FEELING STRONGER, HEALTHIER AND IN BETTER BALANCE**



## Lighting

Indirect lighting for the best relaxation. RGBW for colour choices.



## Panels

Horizontal wood panels for a more harmonic space.



## Speakers

Bluetooth audio



## Seats

Rounded seats for added comfort and legroom.



## Panel colour

All models are available in grey or black cloth to match your room's ambiance.



## Smart, intuitive control panel

Lean back with your favourite playlist, relax to your latest audiobook story, or change ceiling colours with just a touch.

- Wi-Fi capability
- Mobile app available
- Intuitive display (time/temp/lighting/system status).
- 60-minute timer.
- Built-in RGBW light control with Dimmer.
- Built-in Bluetooth audio.
- Voice control compliant with Alexa, Google and Siri.



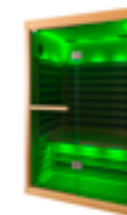
# ENJOY THERAPY THROUGH COLOURS

We all know we need light to live. Especially in the dark winter months. Chromotherapy is about using colours to enhance our health and well-being, with each colour in the spectrum having a different, positive effect on our bodies. Which is your favourite?



## RED

The symbol of love and passion. Increases energy and vitality.



## GREEN

Harmonic and relaxing, supports balance and love.



## BLUE

Increases calmness, peace, love and kindness.



## TURQUOISE

Helps us become more peaceful, serene and creative.



## YELLOW

Happiness and high energy. Increases fun, humour and lightness.



## VIOLET

The colour of luxury and spiritual awareness, stimulates intuition and imagination.

# WHY HOTEL TYLÖSAND CHOSE... INFRARED CABINS

Hotel Tylösand on the coast of south-west Sweden is one of the country's leading spa hotels. Famous for active leisure and recreation, the hotel offers a unique approach to health and fitness. Its new initiative is biohacking featuring IR treatment, laser treatments and led masks. They chose Tylösand cabins for IR treatments.

Anette Rolfsson, the hotel's biohack coordinator explains:

"I have been working with IR treatments for about two years at another spa facility here in Halmstad, but they used it more like a rehab technique. Here we want to use IR for both recovery and inner and outer beauty.

We chose IR as a treatment as it is a part of the biohack concept and we also understand how popular it is right now. "Of course we want to be one of the first spa facilities in Sweden to use IR as treatment."

## How does it work? What are the benefits?

Anette explains that it's not complicated at all. Hotel guests can choose either a 25 minute or 50 minute treatment which is bookable for guests and people who want IR. The people are offered a detox tea for an extra cleansing.

"Infrared saunas are good for inside and outside of our bodies", says Anette. "It has a cleansing effect on your skin, helps you relax and in some cases helps you sleep better. It's a perfect treatment after a workout for better muscle recovery."

## When should I go for infra treatment? After sports? Rehab?

Anette thinks you should always use IR after sport, and any time you want to relax. "I have seen a trend that people who train padel, cross fit, tennis, football etc., use it as a recovery treatment. We also have people who use it for beauty therapy. People of all ages come to us to enjoy IR treatment."

## Why did you choose IR cabins from Tylö?

Anette didn't hesitate in answering the question: "It was a given since we use Tylö's other sauna products in our spa, and we are very happy with them. They are a local company who manufacture excellent quality products."

## Name three things that summarize the IR experience

According to Anette: Pleasant, calming, cleansing.

And asked for any tips when it comes to IR, Anette suggests using an IR cabin regularly for best effect. "What's good with Tylö's IR cabins is that you can connect to Bluetooth and choose your own music. It makes the experience more cosy and pleasant. I recommend everyone to try it. I know they'll love it."

## MORE EFFECT, LESS ENERGY

Infrared cabins use heat waves to heat up your body directly, so you need less heat to get a more intense sweat.

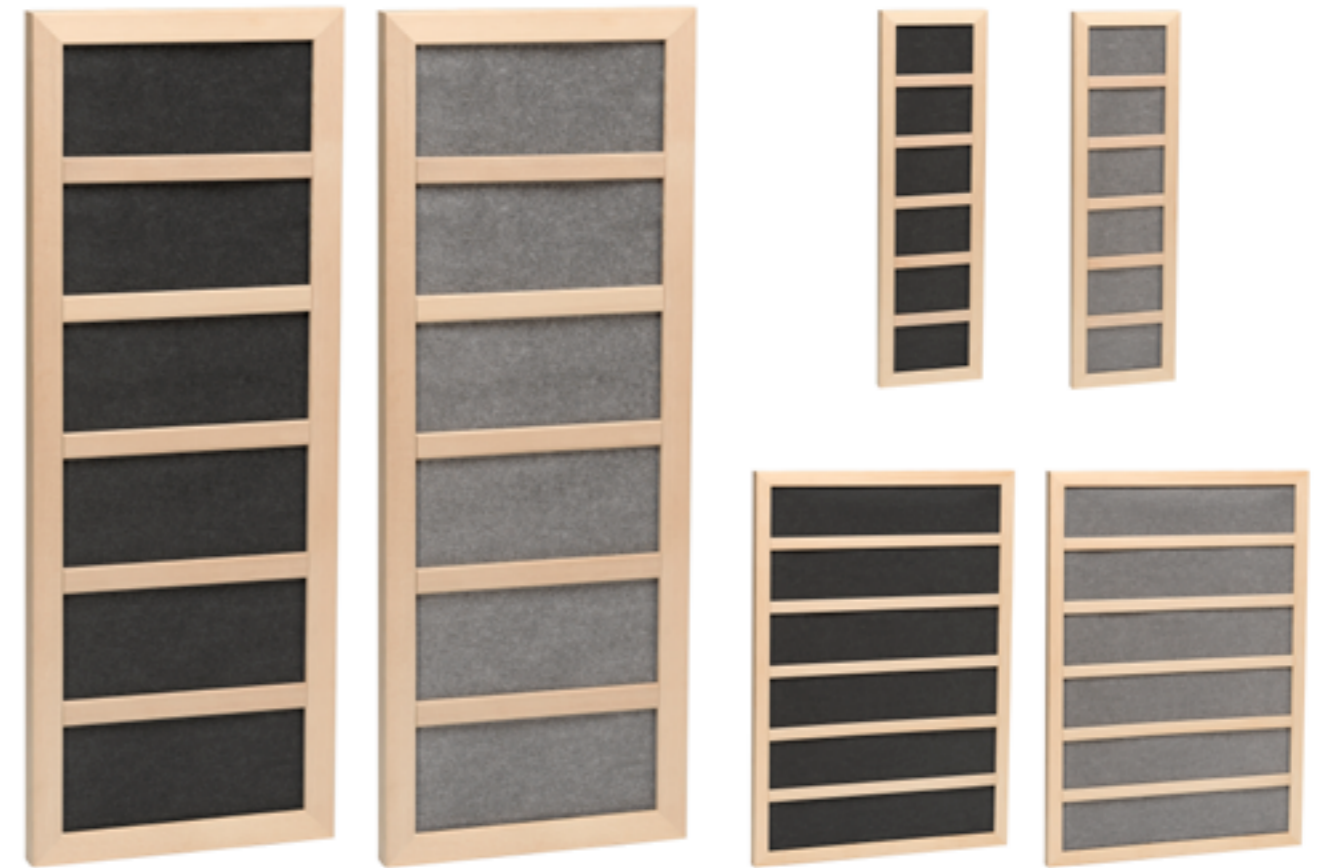
### FULL BODY WARMING

Tylösand cabins use exclusive oversized infrared panels that give you the same heat from bottom to top, evenly spread over your body.

The panels have a larger heating surface to give you the best in bathing comfort. They disperse heat over a wider area to give you the most comfortable surface temperature.

They also transmit maximum exposure over the widest possible area to create optimal infrared wavelengths that give you soft, even heat for that perfect sauna experience.

And they're probably the safest panels on the market, using our own patented technology.



## COMBINATION 2 IN 1 SAUNA

Not sure what type of sauna you want? Why not have both? Bask leisurely in the comfort of a traditional sauna. When time is tight or you're in the mood for a milder heat therapy, then take the infrared option.

Our advanced traditional Tylö sauna system has been seamlessly combined with infrared technology to give you the best of heat.

Choose from three different kinds of loose infrared panels that you can swap for part of the backrest, offering double the amount of sauna joy. Panels available in grey and black.

The fabric panels are made from hemlock and come in three sizes to fit your walls. Combine them in your sauna or use them to build a custom-fitted infrared room.

#### SIZES INFRA PANELS:

- Small: 980 x 275 mm, 110 W
- Medium: 980 x 360 mm, 150 W
- Large: 980 x 680 mm, 300 W





# TYLÖ

Redefining wellness

Enjoy the health and wellness benefits of heat from your own Tylösand™ infrared cabin. This stylish series of infrared cabins for 1,2 or 3 people are built to the highest standards, conform to the toughest regulations and let you enjoy the relaxation and rejuvenation you've been longing for. Switch on the IR. Now switch off from stress.

Also see our catalogues for sauna and steam.

